

The Crown Estate

Policy and Planning update

SUDG/MMO workshop, March 2017

Rosie Kelly, Marine Policy Manager

Who are we?

The Crown Estate is an independent commercial business created by Act of Parliament



100%

Net profit in 2015/16
£304.1 million

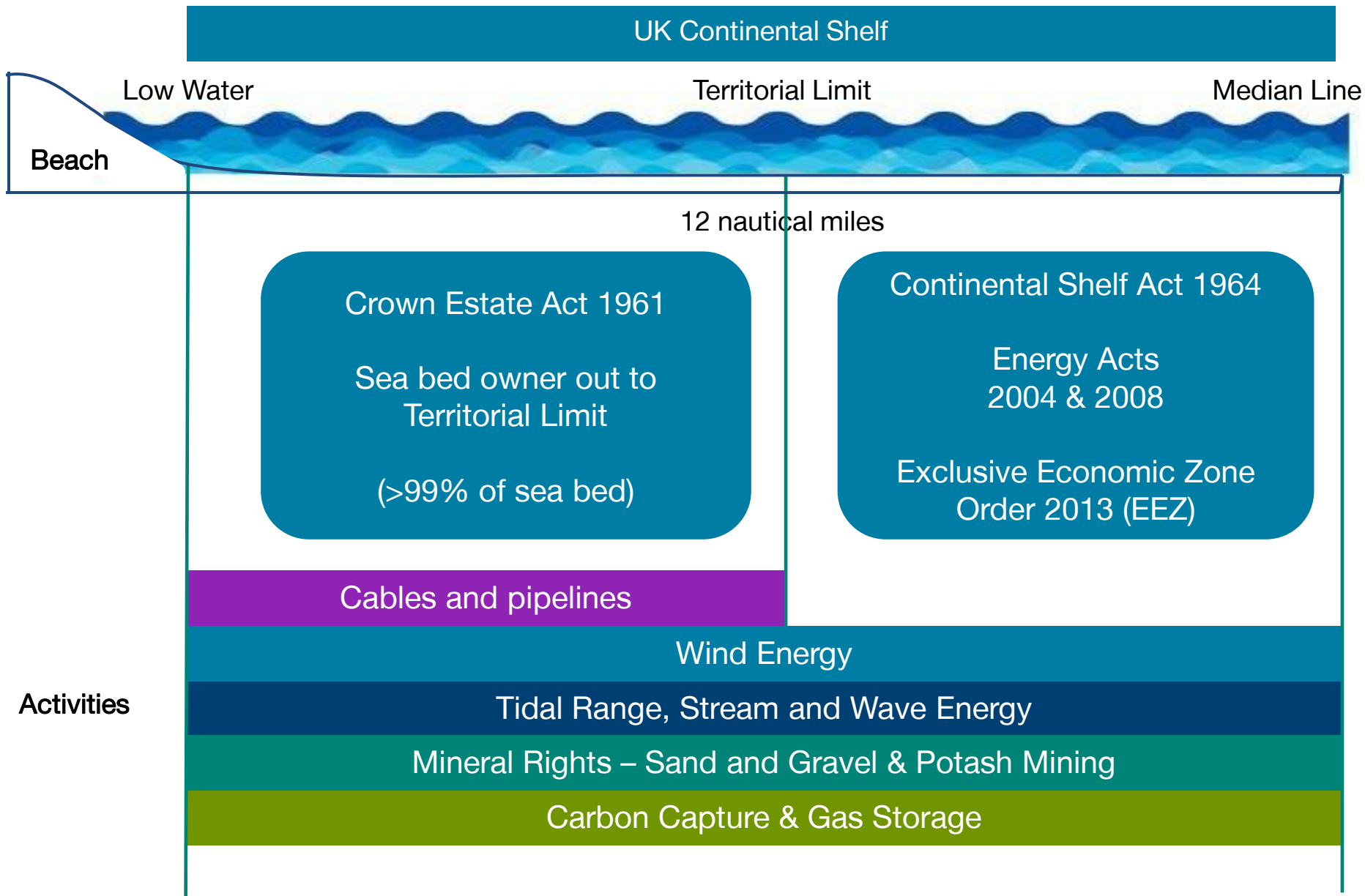


Our capital value is
£12.9 billion

Conscious commercialism defines our approach to business

Rights and Regulatory Framework

Sovereign rights to explore and utilise the natural and energy resources of the UK continental shelf



Energy, Minerals & Infrastructure



Offshore Wind energy



Minerals



Wave & Tidal energy



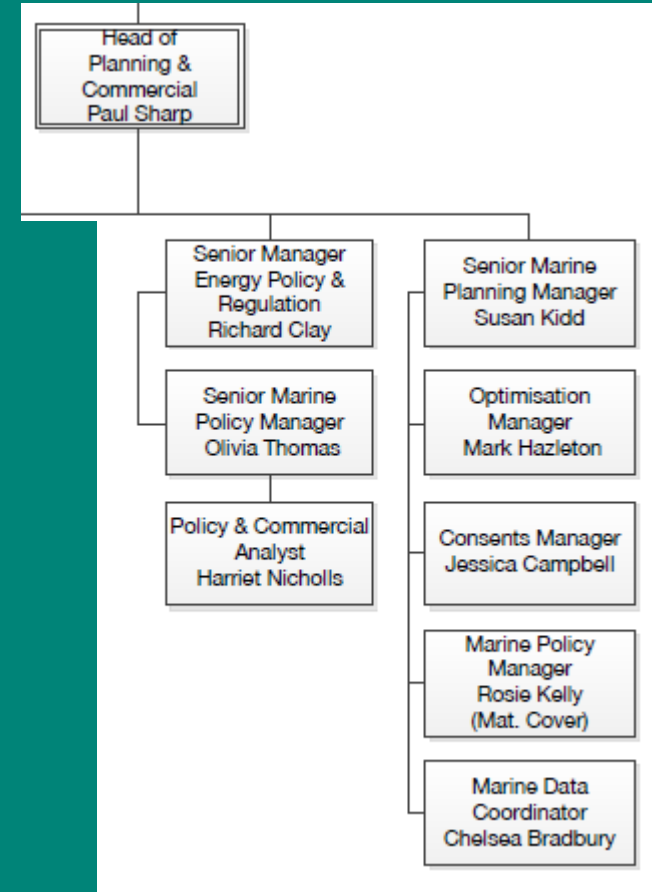
Cables & pipelines



Gas and CO₂ Storage

The Planning team in EMI

- Provision of cross-cutting support to the Energy, Minerals and Infrastructure portfolio
- Marine planning, marine and energy policy, consents, marine data, seabed optimisation
- SUDG: overall interest in industry on the seabed, sponsor secretariat role
- Scottish devolution: 1st April 2017



Aggregates and Marine Minerals

- Aggregates rights awarded through structured tender process (currently every two years)
- 60 production licences; also application areas and exploration and option agreements
- Current tender round closed 1st November 2016
- Sites currently being assessed internally
- Undertaking stakeholder engagement and plan-level HRA at the moment
- Licences to be awarded in summer 2017



Wave and Tidal Stream



- Leasing opportunities: currently under 3MW (option agreement and lease)
- HRA: approach for *ad hoc* leasing has been agreed with SNCBs
- Additional HRA work: streamlining of plan-level HRAs, roll out to other sectors?

Mechanisms for engaging with the MMO

- Stakeholder Focus Group
- ORELG
- Marine Planning Programme Board
- Bi-laterals
- Any other thoughts?





Thank you

Any Questions?